

## Halogen lamps with reflector MR16

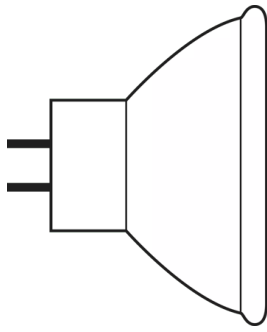


### Product family features

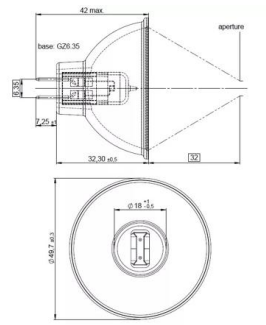
- Xenon instead of krypton as the filler gas (XENOPHOT HLX versions)
- Luminous flux up to 10 % higher with same power consumption (XENOPHOT HLX versions)



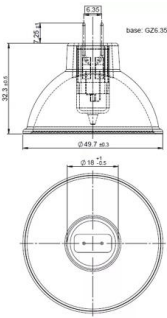
# Product family datasheet



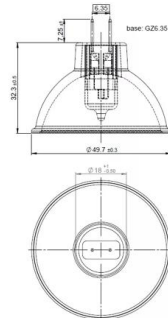
383894\_Halogen Lamp with reflector MR16



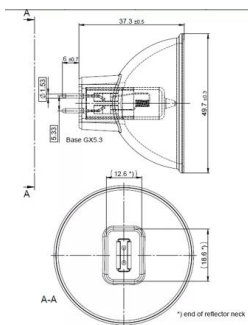
64615 HLX 75W 12V



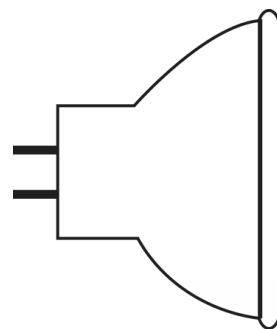
64627 HLX 100W 12V



64634 HLX 150W 15V



64653 HLX 250W 24V



330994\_HALOGEN REFLECTOR LAMPS FO

## Product family datasheet

### Technical data

Product description	Product information	Electrical data		Light technical data	Dimensions & weight		Lifespan
	Order reference	Nominal voltage	Nominal wattage	Focal length	Diameter	Length	Lifespan
64607 50 W 8 V	64607 EFM 50W 8	8 V	50.00 W	32.0 mm	51.0 mm	42.0 mm	50 h
64615 HLX	64615 HLX	12.0 V	75.00 W	32.0 mm	51.0 mm	42.0 mm	50 h
64619 90 W 14.5 V	64619 90W 14,8V	14.5 V	90.00 W	155.0 mm	51.0 mm	45.0 mm	500 h
64627 HLX	64627 HLX	12.0 V	100.00 W	32.0 mm	51.0 mm	42.0 mm	50 h
64629 100 W 12 V	64629 100W 12V	12.0 V	100.00 W	32.0 mm	51.0 mm	42.0 mm	600 h
64637 100 W 12 V	64637 100W 12V	12.0 V	100.00 W	32.0 mm	51.0 mm	42.0 mm	1500 h
64620 150 W 15 V	64620 150W 15V	15.0 V	150.00 W	32.0 mm	51.0 mm	42.0 mm	500 h
64634 HLX	64634 HLX	15.0 V	150.00 W	32.0 mm	51.0 mm	42.0 mm	50 h
64635 HLX <sup>1)</sup>	64635 HLX	15.0 V	150.00 W	19.0 mm	51.0 mm	45.0 mm	50 h
93637 150 W 21 V	93637 150W 21V	21.0 V	150.00 W	44.5 mm	51.0 mm	44.5 mm	100 h
93638 150 W 21 V	93638 EKE150W G	21.0 V	150.00 W	44.5 mm	51.0 mm	44.8 mm	200 h
150 W 21 V GX5.3	150W 21V GX5.3	21.0 V	150.00 W	38.1 mm	51.0 mm	43.3 mm	40 h
64653 HLX	64653 HLX	24.0 V	250.00 W	35.0 mm	51.0 mm	44.5 mm	50 h
93653 250 W 24 V	ELC3 250W GX5.3	24.0 V	250.00 W	35.0 mm	999.9 mm	44.8 mm	300 h
64659 250 W 24 V	64659	24.0 V	250.00 W	35.0 mm	51.0 mm	44.5 mm	1000 h
93506 250 W 120 V	93506	120 V	250.00 W	152.5 mm	51.0 mm	44.5 mm	175 h
93654 250 W 24 V	93654	24.0 V	250.00 W	35.0 mm	51.0 mm	44.8 mm	300 h
93518 300 W 120 V	93518 ELH 300W	120 V	300.00 W	152.5 mm	51.0 mm	45.0 mm	35 h

Product description	Additional product data			Capabilities	
	Coating	Base (standard designation)	Minimum diameter of lamp enclosure	Cooling	Burning position
64607 50 W 8 V	Aluminum	GZ6.35	51.0 mm	Forced	p90/p15
64615 HLX	Dichroic	GZ6.35	51.0 mm	Forced	p90/p15
64619 90 W 14.5 V	True	GX5.3	51.0 mm	Forced	Other
64627 HLX	True	GZ6.35	51.0 mm	Forced	Other
64629 100 W 12 V	Dichroic	GZ6.35	51.0 mm	Forced	p90/p15
64637 100 W 12 V	Dichroic	GZ6.35			s120
64620 150 W 15 V	Dichroic	GZ6.35			p90/p15
64634 HLX	Dichroic	GZ6.35	51.0 mm	Forced	p90/p15

## Product family datasheet

Product description	Additional product data			Capabilities	
	Coating	Base (standard designation)	Minimum diameter of lamp enclosure	Cooling	Burning position
64635 HLX <sup>1)</sup>	Gold	GZ6.35	51.0 mm	Forced	Any
93637 150 W 21 V	True	GX5.3	51.0 mm	Convection	s90
93638 150 W 21 V	Dichroic	GX5.3	51.0 mm	Forced	s90
150 W 21 V GX5.3	False	GX5.3	51.0 mm	Forced	Other
64653 HLX	True	GX5.3	51.0 mm	Forced	Any
93653 250 W 24 V	Dichroic	GX5.3	51.0 mm	Forced	Any
64659 250 W 24 V	Dichroic	GX5.3			Any
93506 250 W 120 V	Dichroic	GY5.3			s90
93654 250 W 24 V	True	GX5.3	51.0 mm	Forced	Any
93518 300 W 120 V	Dichroic	GY5.3			s90

Product description	Country specific categorizations		Environmental information Information according Art. 33 of EU Regulation (EC) 1907/2006 (REACH)	
	ANSI code	LIF	Date of Declaration	Primary Article Identifier
64607 50 W 8 V	EFM	A1/229	29-02-2024	4050300006789
64615 HLX	EFN	A1/230	29-02-2024	4050300006796   4055462168832
64619 90 W 14.5 V	EPX		29-02-2024	4050300017273
64627 HLX	EFP	A1/231	29-02-2024	4050300006802   4008321074331   4055462168405   4052899447592
64629 100 W 12 V	EFP-6		29-02-2024	4050300943169   4008321540164
64637 100 W 12 V	EBV	A1/271	29-02-2024	4008321352071
64620 150 W 15 V	EFR-5		29-02-2024	4050300797397   4008321540140
64634 HLX	EFR	A1/232	29-02-2024	4050300006819   4055462168375   4052899447561   4055462169372
64635 HLX <sup>1)</sup>			29-02-2024	4050300238807
93637 150 W 21 V	EJV		29-02-2024	4050300350097   4008321106070
93638 150 W 21 V	EKE		29-02-2024	4050300456843
150 W 21 V GX5.3	EJM		29-02-2024	4008321028082
64653 HLX	ELC	A1/259	29-02-2024	4052899329348
93653 250 W 24 V	ELC-3		29-02-2024	4050300636450
64659 250 W 24 V	ELC-10		29-02-2024	4008321197795   4008321540188
93506 250 W 120 V	ENH		29-02-2024	4050300349930
93654 250 W 24 V			29-02-2024	4050300666464
93518 300 W 120 V	ELH		29-02-2024	4050300350059

## Product family datasheet

Product description	Candidate List Substance 1	Declaration No. in SCIP database	Photometrical data	
			Nominal luminous flux	Color temperature
64607 50 W 8 V	No declarable substances contained	No declarable substances contained		
64615 HLX	No declarable substances contained	In work		
64619 90 W 14.5 V		In work	43 lm	
64627 HLX	No declarable substances contained	In work		
64629 100 W 12 V	No declarable substances contained	No declarable substances contained		
64637 100 W 12 V	No declarable substances contained	No declarable substances contained		3000 K
64620 150 W 15 V	No declarable substances contained	No declarable substances contained		3270 K
64634 HLX	No declarable substances contained	In work		
64635 HLX <sup>1)</sup>	No declarable substances contained	No declarable substances contained		
93637 150 W 21 V	No declarable substances contained	No declarable substances contained	270 lm	
93638 150 W 21 V	No declarable substances contained	No declarable substances contained	160 lm	3300 K
150 W 21 V GX5.3		In work	115 lm	3400 K
64653 HLX	No declarable substances contained	No declarable substances contained	900 lm	3400 K
93653 250 W 24 V	No declarable substances contained	No declarable substances contained	550 lm	3250 K
64659 250 W 24 V	No declarable substances contained	In work	400 lm	3200 K
93506 250 W 120 V	No declarable substances contained	No declarable substances contained	340 lm	3150 K
93654 250 W 24 V		In work	475 lm	3200 K
93518 300 W 120 V	No declarable substances contained	No declarable substances contained	525 lm	

<sup>1)</sup> Infra-red lamp; temperature at the focal point approximately 1300 °C

## Product family datasheet

---

### Application advice

For more detailed application information and graphics please see product datasheet.

---

### References / Links

For further technical information please refer to the following OSRAM brochure:

“Technology and applications, Low-voltage tungsten-halogen lamps”

“Halogen lamps, low and medium voltage for entertainment, technical and medical applications” cross reference list

---

### Disclaimer

Subject to change without notice. Errors and omission excepted. Always make sure to use the most recent release.