

Halogen (< 75 V) with Reflector

OSRAM reflector low voltage halogen lamps provide precision optical alignment for medical and industrial fiber optic illuminators, microscopy, and surgical overhead lighting

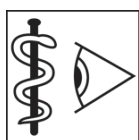


Areas of application

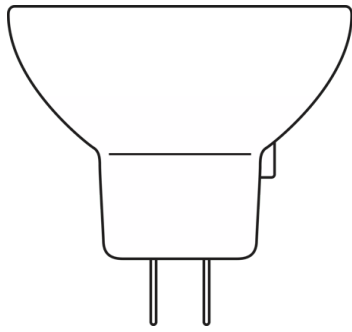
- Microscopy
- Laboratory & Analysis
- UV Curing
- Fiber Illumination
- Surgical & Dental Overhead

Product features and benefits

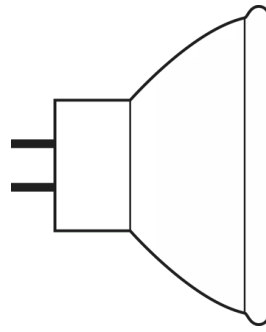
- Precise filament alignment with patented quartz pinch technology
- OSRAM HLX lamps provide 10% higher luminous efficacy over standard halogen
- Instant on and nearly constant luminous flux over the life of the lamp
- Dimmable



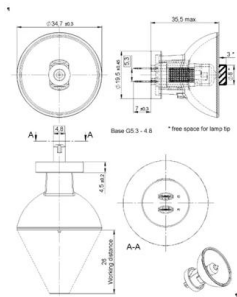
Product family datasheet



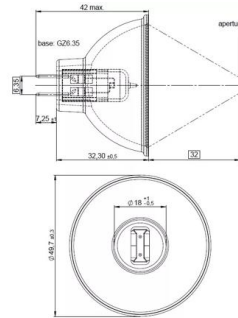
HALOGEN LAMP WITH REFLECTOR 64255



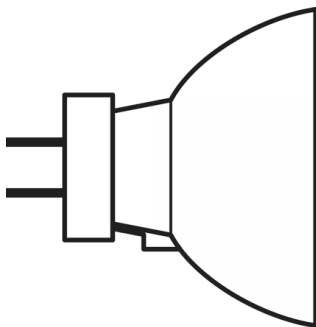
Halogen Lamp with reflector MR16



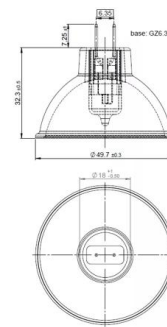
64617S 75W 12V



64615 HLX 75W 12V

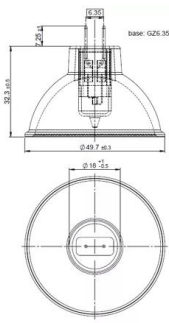


Halogen Lamp with reflector MR11

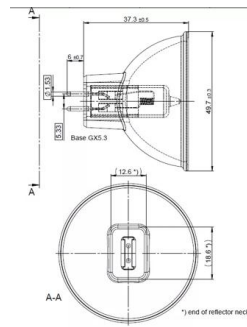


64634 HLX 150W 15V

Product family datasheet



64627 HLX 100W 12V



64653 HLX 250W 24V

Product family datasheet

Technical data

| Product description | General Product Information | | Electrical Data | Photometric Data |
|---------------------------------|-----------------------------|----------|-----------------|--------------------------|
| | ANSI code | LIF code | Nominal voltage | Color rendering index Ra |
| 64255 20 W 8 V | - | | 8 V | 100 |
| 93520 300 W 82 V ¹⁾ | FHS | | 82.0 V | 100 |
| 64607 50 W 8 V | EFM | A1/229 | 8 V | 100 |
| 64619 90 W 14.5 V | EPX | | 14.5 V | 100 |
| 93506 250 W 120 V | ENH | | 120 V | 100 |
| 64617 S 75 W 12 V ²⁾ | - | | 12.0 V | |
| 64615 HLX | EFN | A1/230 | 12.0 V | |
| 64617 75 W 12 V | - | M/117 | 12.0 V | 100 |
| 64634 HLX | EFR | A1/232 | 15.0 V | |
| 64627 HLX | EFP | A1/231 | 12.0 V | 90-100 |
| 64624 100 W 12 V | - | A1/51 | 12.0 V | 100 |
| 64659 250 W 24 V | ELC-10 | A1/259 | 24.0 V | 100 |
| 93518 300 W 120 V | ELH | | 120 V | 100 |
| 64629 100 W 12 V | EFP-6 | A1/231 | 12.0 V | 100 |
| 64637 100 W 12 V | EBV | A1/271 | 12.0 V | 100 |
| 64635 HLX ³⁾ | - | | 15.0 V | 100 |
| 64620 150 W 15 V | EFR-5 | A1/232 | 15.0 V | |
| 64653 HLX | ELC | A1/259 | 24.0 V | 100 |
| 93637 150 W 21 V | EJV | | 21.0 V | 100 |
| 93638 150 W 21 V | EKE | | 21.0 V | 100 |
| 93653 250 W 24 V | ELC-3 | A1/259 | 24.0 V | 100 |

| Product description | Focal length | Nominal luminous flux | Color temperature | Beam type |
|---------------------------------|--------------|-----------------------|-------------------|-----------|
| 64255 20 W 8 V | 26.0 mm | | | |
| 93520 300 W 82 V ¹⁾ | 152.5 mm | 650 lm | | |
| 64607 50 W 8 V | 32.0 mm | | | |
| 64619 90 W 14.5 V | 155.0 mm | 43 lm | | |
| 93506 250 W 120 V | 152.5 mm | 340 lm | 3150 K | |
| 64617 S 75 W 12 V ²⁾ | 26.0 mm | | | SP |
| 64615 HLX | 32.0 mm | | | |
| 64617 75 W 12 V | 26.0 mm | | | |
| 64634 HLX | 32.0 mm | | | |
| 64627 HLX | 32.0 mm | | | |
| 64624 100 W 12 V | 26.0 mm | | | |
| 64659 250 W 24 V | 35.0 mm | 400 lm | 3200 K | |
| 93518 300 W 120 V | 152.5 mm | 525 lm | | |
| 64629 100 W 12 V | 32.0 mm | | | |

Product family datasheet

| Product description | Focal length | Nominal luminous flux | Color temperature | Beam type |
|-------------------------|--------------|-----------------------|-------------------|-----------|
| 64637 100 W 12 V | 32.0 mm | 150 lm | 3000 K | SP |
| 64635 HLX ³⁾ | 19.0 mm | | | |
| 64620 150 W 15 V | 32.0 mm | | 3270 K | |
| 64653 HLX | 35.0 mm | 900 lm | 3400 K | |
| 93637 150 W 21 V | 44.5 mm | 270 lm | | |
| 93638 150 W 21 V | 44.5 mm | 160 lm | 3300 K | |
| 93653 250 W 24 V | 35.0 mm | 550 lm | 3250 K | |

| Product description | Physical Attributes & Dimensions | Operating Conditions | | |
|---------------------------------|----------------------------------|----------------------|------------|------------------------------------|
| | Lamp base | Burning position | Cooling | Minimum diameter of lamp enclosure |
| 64255 20 W 8 V | G4 | Other | Forced | 35.0 mm |
| 93520 300 W 82 V ¹⁾ | GX5.3 | s90 | | |
| 64607 50 W 8 V | GZ6.35 | p90/p15 | Forced | 51.0 mm |
| 64619 90 W 14.5 V | GX5.3 | Other | Forced | 51.0 mm |
| 93506 250 W 120 V | GY5.3 | s90 | | |
| 64617 S 75 W 12 V ²⁾ | G5.3-4.8 | p90/p15 | Forced | 35.0 mm |
| 64615 HLX | GZ6.35 | p90/p15 | Forced | 51.0 mm |
| 64617 75 W 12 V | G5.3-4.8 | p90/p15 | Forced | 35.0 mm |
| 64634 HLX | GZ6.35 | p90/p15 | Forced | 51.0 mm |
| 64627 HLX | GZ6.35 | Other | Forced | 51.0 mm |
| 64624 100 W 12 V | G5.3-4.8 | p90/p15 | Forced | 35.0 mm |
| 64659 250 W 24 V | GX5.3 | Any | | |
| 93518 300 W 120 V | GY5.3 | s90 | | |
| 64629 100 W 12 V | GZ6.35 | p90/p15 | Forced | 51.0 mm |
| 64637 100 W 12 V | GZ6.35 | s120 | | |
| 64635 HLX ³⁾ | GZ6.35 | Any | Forced | 51.0 mm |
| 64620 150 W 15 V | GZ6.35 | p90/p15 | | |
| 64653 HLX | GX5.3 | Any | Forced | 51.0 mm |
| 93637 150 W 21 V | GX5.3 | s90 | Convection | 51.0 mm |
| 93638 150 W 21 V | GX5.3 | s90 | Forced | 51.0 mm |
| 93653 250 W 24 V | GX5.3 | Any | Forced | 51.0 mm |

| Product description | Lifetime Data | Environmental & Regulatory Information Information according Art. 33 of EU Regulation (EC) 1907/2006 (REACH) | | |
|--------------------------------|------------------|---|------------------------------------|------------------------------------|
| | Nominal lifetime | Primary article identifier | Declaration no. in SCIP database | Candidate list substance 1 |
| 64255 20 W 8 V | 50 hr | 4050300006833 | No declarable substances contained | No declarable substances contained |
| 93520 300 W 82 V ¹⁾ | 70 hr | 4050300350196 | No declarable substances contained | No declarable substances contained |
| 64607 50 W 8 V | 50 hr | 4050300006789 | No declarable substances contained | No declarable substances contained |
| 64619 90 W 14.5 V | 500 hr | 4050300017273 | In work | |

Product family datasheet

| Product description | Lifetime Data | Environmental & Regulatory Information Information according Art. 33 of EU Regulation (EC) 1907/2006 (REACH) | | |
|---------------------------------|------------------|--|------------------------------------|------------------------------------|
| | Nominal lifetime | Primary article identifier | Declaration no. in SCIP database | Candidate list substance 1 |
| 93506 250 W 120 V | 175 hr | 4050300349930 | No declarable substances contained | No declarable substances contained |
| 64617 S 75 W 12 V ²⁾ | 25 hr | 4050300461106 | No declarable substances contained | No declarable substances contained |
| 64615 HLX | 50 hr | 4050300006796 | No declarable substances contained | No declarable substances contained |
| 64617 75 W 12 V | 25 hr | 4050300231211 | No declarable substances contained | No declarable substances contained |
| 64634 HLX | 50 hr | 4050300006819 | No declarable substances contained | No declarable substances contained |
| 64627 HLX | 50 hr | 4050300006802 | No declarable substances contained | No declarable substances contained |
| 64624 100 W 12 V | 25 hr | 4050300013916 | No declarable substances contained | No declarable substances contained |
| 64659 250 W 24 V | 1000 hr | 4008321197795 | No declarable substances contained | No declarable substances contained |
| 93518 300 W 120 V | 35 hr | 4050300350059 | No declarable substances contained | No declarable substances contained |
| 64629 100 W 12 V | 600 hr | 4050300943169 4008321540164 | No declarable substances contained | No declarable substances contained |
| 64637 100 W 12 V | 1500 hr | 4008321352071 | No declarable substances contained | No declarable substances contained |
| 64635 HLX ³⁾ | 50 hr | 4050300238807 | No declarable substances contained | No declarable substances contained |
| 64620 150 W 15 V | 500 hr | 4008321540140 4050300797397 | No declarable substances contained | No declarable substances contained |
| 64653 HLX | 50 hr | 4052899329348 | No declarable substances contained | No declarable substances contained |
| 93637 150 W 21 V | 100 hr | 4050300350097 | No declarable substances contained | No declarable substances contained |
| 93638 150 W 21 V | 200 hr | 4050300456843 | No declarable substances contained | No declarable substances contained |
| 93653 250 W 24 V | 300 hr | 4050300636450 | No declarable substances contained | No declarable substances contained |

¹⁾ Available on request

²⁾ Spot adjustment

³⁾ Infra-red lamp; temperature at the focal point approximately 1300 °C

Product family datasheet

Safety advice

To prevent personal injury or damage to property, halogen lamps may only be operated in suitable luminaires designed with suitable mechanisms (protective shields, grids, etc.) to ensure that in the event of a lamp bursting no parts/shards can escape and that during operation no ultraviolet radiation can escape. There must also be a warning sign to indicate that the lamps give off high levels of heat. Detailed information is available on request.

Application advice

For more detailed application information and graphics please see product datasheet.

Disclaimer

Subject to change without notice. Errors and omission excepted. Always make sure to use the most recent release.