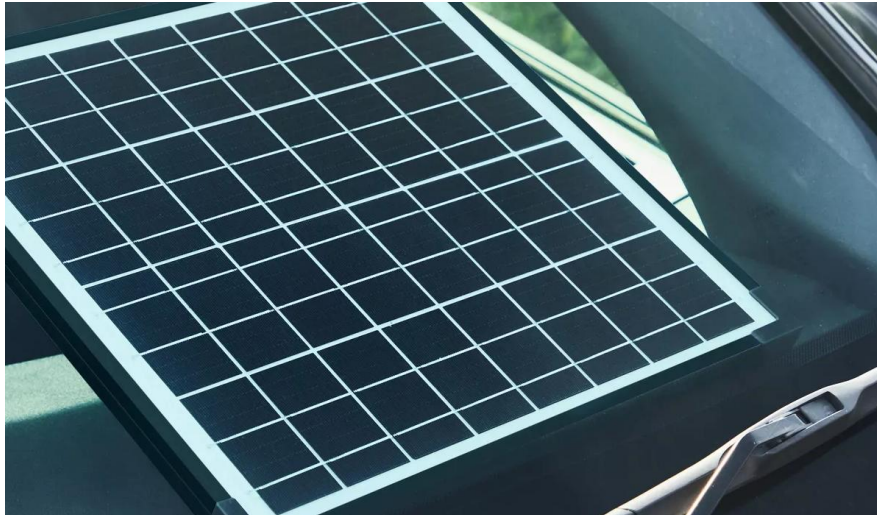


# BATTERYcharge SOLAR 20W



## Solar-powered battery maintenance for vehicles

Modern vehicles have a small but constant battery drain. They are packed full of electrical systems that are constantly working even when the ignition is not running. Alarms, immobilisers, and lock monitoring are examples of systems running in the background that can cause the battery to discharge even when the vehicle is not being used. The OSP2000 is a solar powered battery maintainer for 12V vehicles - the low carbon, more environmentally friendly way to maintain your vehicle battery when not in use. Ideal for seasonally-used vehicles such as caravans, classic cars and motorcycles. Supplied with DC power plug and battery clips, works in overcast conditions and is IP 65 water resistant. Reverse polarity protection prevents damage if the clamps are connected to the incorrect battery poles.

## Product family datasheet

### Technical data

	Product information	General Product Information	Electrical Data	Physical Attributes & Dimensions
Product description	Application (Category and Product specific)	Global order reference	Maintenance Charge (up to)	Length
BATTERY charge SOLAR 20W	Solar battery maintainer	OSP2000	1.11 A	351 mm


	Dimensions & weight			
Product description	Width	Height	Power Cable Length	Clamps Cable Length
BATTERY charge SOLAR 20W	18.0 mm	410 mm	3.0 m	0.3 m

	Environmental & Regulatory Information Information according Art. 33 of EU Regulation (EC) 1907/2006 (REACH)	
Product description	Date of declaration	Declaration no. in SCIP database
BATTERY charge SOLAR 20W	11-09-2024	In work

## Product family datasheet

---

### Download Data

File	
	User instruction BATTERYcharge

#### Application advice

For more detailed application information and graphics please see product datasheet.

#### Disclaimer

Subject to change without notice. Errors and omission excepted. Always make sure to use the most recent release.