

LEDguardian ROAD FLARE Signal V16

LEDguardian warning- and safety lights



V16-Certified
LED warning light



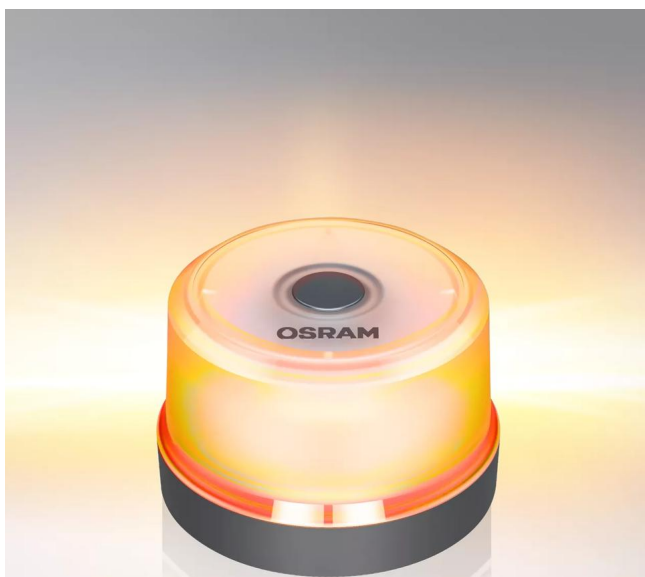
360° rotating warning light
Improved visibility and therefore increased safety for you and others on the road



1 x 9V Battery included
Operational readiness



Magnetic mounting
Due to the magnetic function the LED warning light can be conveniently attached to the car



Light is safety. See better and be seen better with OSRAM.

Be prepared - with OSRAM LEDguardian warning and safety lights. The OSRAM LEDguardian ROAD FLARE Signal V16 is an LED warning light approved according to V16 regulations. The yellow-orange warning light function of the OSRAM LEDguardian ROAD FLARE Signal V16 rotates through 360 degrees and is visible from a long distance. In an emergency, it can provide crucial information about a dangerous situation in road traffic. In contrast to the warning triangle, it draws the attention of other road users to an unusual situation in traffic by actively flashing, distinguished from the simple reflection of a warning triangle. With 12 long-life high-power LEDs with up to 140lm and 2000K, you can draw attention to yourself by day and night and, as a preventive measure, also make other road users aware of a dangerous situation such as a breakdown vehicle in traffic. The compact design allows you to store the warning light within easy reach in the car and, if necessary, the magnetic function allows it to be quickly and easily attached directly to the vehicle roof. A further advantage is that the OSRAM LEDguardian ROAD FLARE Signal V16 can be used immediately thanks to the battery included in the scope of supply. The LEDguardian ROAD FLARE Signal V16 has been tested and validated in our DIN EN ISO/IEC 17025 certified environmental simulation laboratory for extreme external influences in terms of water, dust, heat, cold and impacts from falls. With the IP protection class IP54, the OSRAM LEDguardian ROAD FLARE Signal V16 is insensitive to water, dust and shocks. OSRAM offers a 2-year warranty* on this product.

Product datasheet

Technical data

Product information

Order reference	LEDSL102
Application (Category and Product specific)	Warning and safety lights
Number of LED	9

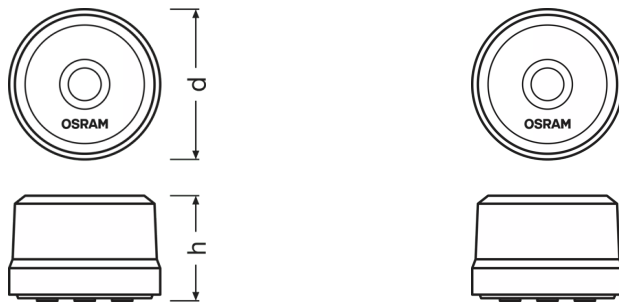
Electrical data

Nominal wattage	6.00 W
Nominal voltage	9.0 V

Photometrical data

Color temperature	2000 K
Light color LED	Orange

Dimensions & weight



Product weight	110.00 g
Length	83.0 mm
Width	83.0 mm
Height	57.0 mm

Colors & materials

Base color	Orange
------------	--------

Lifespan

Guarantee	2 years
-----------	---------

Additional product data

Type of Battery	Alkaline
-----------------	----------

Product datasheet

Scope of battery	Yes
Battery	6LR61/9V (included)

Capabilities

Technology	LED
------------	-----

Certificates & standards

Standards	CE
Type of protection	IP54

Country specific categorizations

Order reference	LED5L102
-----------------	----------

Environmental information



Information according Art. 33 of EU Regulation (EC) 1907/2006 (REACH)	
Date of Declaration	08-03-2024
Primary Article Identifier	4062172184359
Candidate List Substance 1	No declarable substances contained
Declaration No. in SCIP database	No declarable substances contained

Logistical Data

Product code	Product description	Packaging unit (Pieces/Unit)	Dimensions (length x width x height)	Volume	Gross weight
4062172184359	LEDguardian	Folding carton box 1	86 mm x 86 mm x 63 mm	0.47 dm ³	134.00 g
4062172184366	LEDguardian	Shipping carton box 20	452 mm x 190 mm x 158 mm	13.57 dm ³	3000.00 g

The mentioned product code describes the smallest quantity unit which can be ordered. One shipping unit can contain one or more single products. When placing an order, for the quantity please enter single or multiples of a shipping unit.

Download Data

File	
	Movie application OSRAM LEDguardian ROAD FLARE SIGNAL V16 (EN)
	360 Degree Image LEDguardian Road Flare Signal V16

Product datasheet

Legal advice

*for precise conditions please refer to:

www.osram.com/am-guarantee

Application advice:

For more detailed application information and graphics please see product datasheet and user instruction.

Application advice

For more detailed application information and graphics please see product datasheet.

Disclaimer

Subject to change without notice. Errors and omission excepted. Always make sure to use the most recent release.

The OSRAM logo is displayed in a bold, orange, sans-serif font.